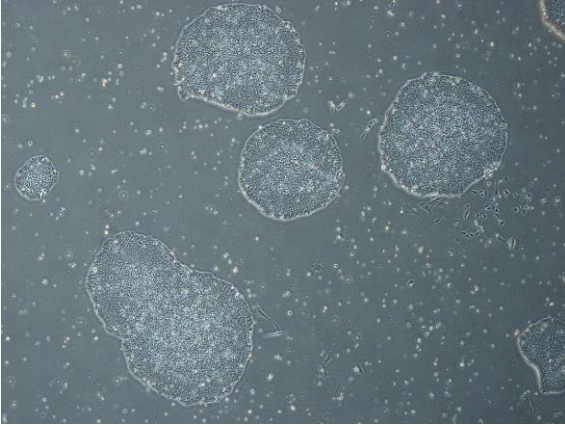
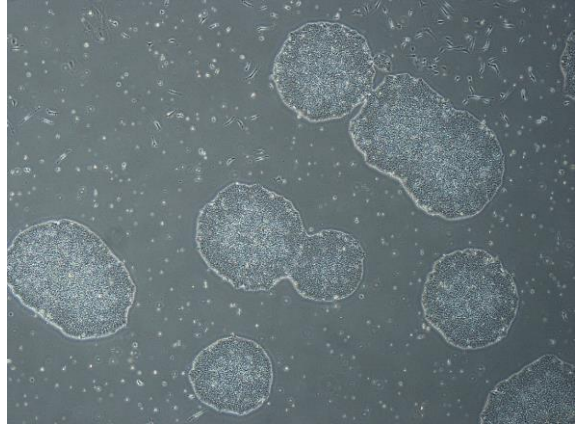


【 CiRA-j-1478 】 Morphology of iPSC colonies

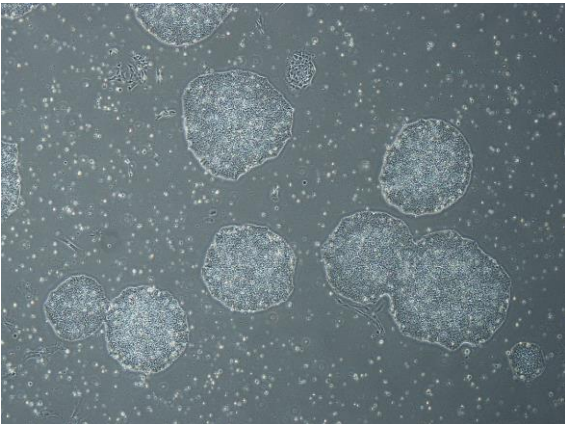
CiRA-j-1478-A: passage-2



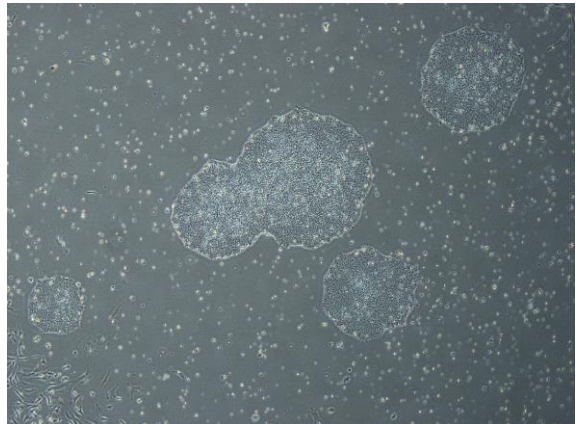
CiRA-j-1478-B: passage-2



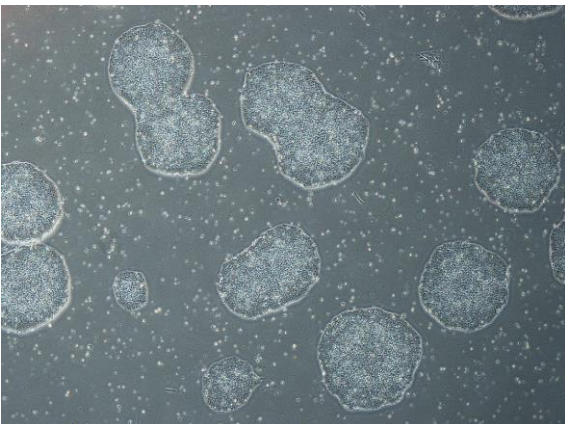
CiRA-j-1478-C: passage-2



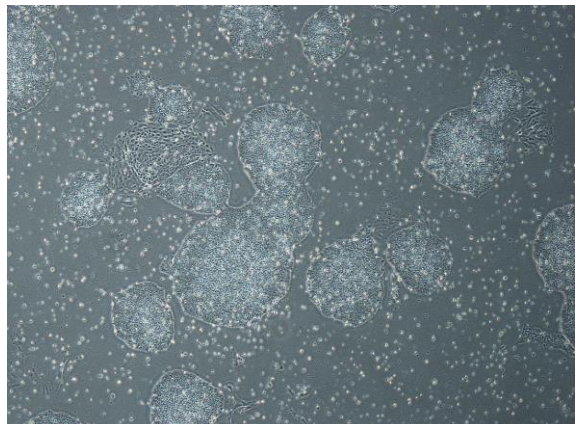
CiRA-j-1478-D: passage-2



CiRA-j-1478-E: passage-2



CiRA-j-1478-F: passage-2



(All images were captured at 4x magnification)